

Early Versus Late Tracheostomy in Mechanically Ventilated COVID-19 Patients: A Comparative Study

Samrand Fattah Ghazi¹, Nima Nazari², Mohammad Taghi Beigmohammadi¹, Masoud Ramezani¹, Mohammadreza Salehi³,
Yeganeh Abedipour¹

¹ Department of Intensive Care Medicine, Imam Khomeini Hospital Complex, Tehran University of Medical Sciences, Tehran, Iran

² Department of Anesthesiology, Children's Medical Center, Tehran University of Medical Sciences, Tehran, Iran

³ Department of Infectious Diseases, Research Center for Antibiotic Stewardship and Antimicrobial Resistance, Tehran University of Medical Sciences, Tehran, Iran

Received: 01 Sep. 2022; Accepted: 24 May 2023

Abstract- The decision to perform tracheostomy during the COVID-19 pandemic has been based mainly on practical and empirical standards. Also, the amount of scientific evidence to determine the exact timing of tracheostomy in patients with severe COVID-19 on mechanical ventilation is not significant. We conducted a retrospective cohort study on mechanically ventilated COVID-19 patients from April 25, 2021 to January 25, 2022 in intensive care units of Imam Khomeini Hospital Complex, Tehran, Iran. The 30-day survival of patients was calculated and compared between patients under tracheostomy and those without tracheostomy. A number of 135 COVID-19 cases (75 patients in the intubated group and 60 patients in the tracheostomy group) were included in this study. The mean age of the population was 53.6±12.4. The overall mortality rate was 101 (74.8%). The 30-day mortality rate was significantly higher in the intubated group (90.6%) than in the tracheostomy group (55%) ($P < 0.001$). The mortality rate was 60% in the early (≤ 7 days) tracheostomy group and 50% in the late (>7 days) group. This difference was not statistically significant ($P > 0.05$). Tracheostomy is a preferred method in airway management of severe COVID-19 patients under mechanical ventilation; however, early tracheostomy during the first week of intubation may not be superior to late tracheostomy in decreasing the mortality rate.

© 2023 Tehran University of Medical Sciences. All rights reserved.

Acta Med Iran 2023;61(6):323-328.

Keywords: Coronavirus disease 2019 (COVID-19); Late tracheostomy; Early tracheostomy; Airway management

Introduction

Over the past few decades, emerging new strains of coronaviruses has caused severe respiratory diseases (1-4). In December 2019, the first pneumonia patients with an unknown origin were detected in Wuhan, Hubei, China (5). The causative agent was identified as a novel betacoronavirus, currently named as severe acute respiratory syndrome coronavirus 2 (SARS-CoV-2), which shares phylogenetic similarity with SARS-CoV (6,7). The World Health Organization (WHO) named the new disease COVID-19 and declared it a public health emergency (8).

The most common clinical symptoms of COVID-19 include fever, myalgia, weakness, and dry cough. However, the respiratory symptoms can progress and develop into pneumonia in some cases (9,10). In most severe clinical forms, the respiratory failure associated with COVID-19 may meet the definition of acute respiratory distress syndrome (ARDS) (11,12).

Among patients with COVID-19 admitted to hospitals, the need for invasive mechanical ventilation ranges widely from 2.3% to 33.1% (13-15). Determining the exact time for starting mechanical ventilation in ICU patients with Covid-19 and respiratory failure can be highly challenging (16). Moreover, long-time mechanical

Corresponding Author: Y. Abedipour

Department of Intensive Care Medicine, Imam Khomeini Hospital Complex, Tehran University of Medical Sciences, Tehran, Iran
Tel: +98 9128050154, E-mail address: yeg.abedipor@gmail.com

Copyright © 2023 Tehran University of Medical Sciences. Published by Tehran University of Medical Sciences

This work is licensed under a Creative Commons Attribution-NonCommercial 4.0 International license (<https://creativecommons.org/licenses/by-nc/4.0/>). Non-commercial uses of the work are permitted, provided the original work is properly cited

Early or late tracheostomy in COVID-19

ventilation is usually associated with endotracheal intubation and weaning complications. Therefore, a tracheostomy can be recommended as an alternative method in patients under mechanical ventilation (17,18).

However, tracheostomy is not always beneficial for patients with respiratory diseases, including COVID-19 because tracheostomized patients can develop serious complications for several months after discharge (19). Careful considerations should therefore be taken by a multidisciplinary team during decision-making for tracheostomy (17). The decision to perform a tracheostomy on COVID-19 patients has been based mainly on practical and empirical standards, and the scientific evidence to help decision-making, especially in terms of the exact timing of tracheostomy is not sufficient (17,20).

As the point of advantages and disadvantages of tracheostomy, we compared the 30-day survival of COVID-19 patients under invasive mechanical ventilation with and without tracheostomy in this study. We also compared the survival of patients under early tracheostomy with those under late tracheostomy.

Materials and Methods

A retrospective cohort study was conducted on mechanically ventilated COVID-19 patients in intensive care units of Imam Khomeini Hospital Complex, Tehran, Iran, from April 25, 2021 to January 25, 2022. The Delta variant (B.1.617.2) of SARS-CoV-2 was reported to be dominant in Iran during that time. Patients included in the

study had the following criteria:

- 1) aged 18–75 years
- 2) SARS-CoV2 RT-PCR test positive from nasopharyngeal swab or respiratory secretions
- 3) diagnosed with respiratory failure caused by COVID-19 as the reason for mechanical respiratory support
- 4) being under mechanical ventilation for more than 48 hours
- 5) undergone the tracheostomy performed by percutaneous dilatational tracheostomy (PDT) technique.

Exclusion criteria included patients with incomplete information files, patients who underwent emergency tracheostomy, or pregnant women.

Demographic data, vital signs, percentage of lung involvement, and clinical scores including the Glasgow Coma Scale (GCS), Acute Physiology and Chronic Health Evaluation (APACH-II) score, and Sequential Organ Failure Assessment (SOFA) score were collected from the patients' files upon admission to the ICU.

The 30-day survival of patients was first calculated and then compared between patients under tracheostomy and those without tracheostomy. The overall average survival time was also calculated for total patients and for each group. Patients with early tracheostomy (PDT was performed ≤ 7 days of intubation) were further compared against those with late tracheostomy (PDT was performed > 7 days of intubation) (Figure 1).

The study was approved by the ethics committee of Tehran University of Medical Sciences (IR.TUMS.MEDICINE.REC.1400.140).

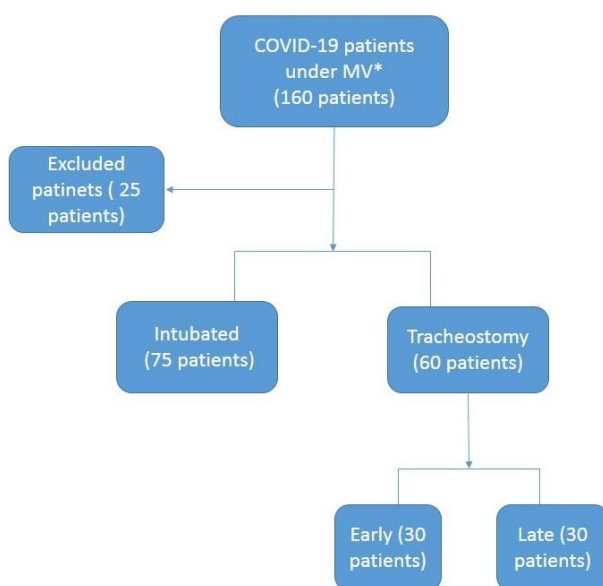


Figure 1. flowchart of the study enrollment. *Mechanical Ventilation

Statistical analysis

The SPSS software version 22 was used to analyze the data. The Kaplan-Meier method was used to analyze the 30-day survival of patients. The t-test (Mann-Whitney test if necessary) and chi-square test (Fisher's exact test if necessary) were used to compare quantitative variables between the two groups. An Alpha error level of less than 5% was considered significant.

Results

Out of 160 COVID-19 cases with the history of mechanical ventilation initially evaluated, a total of 135 patients were eligible for inclusion (75 patients in the intubated group, 60 patients in the tracheostomy group). The mean age of the population was 53.6 ± 12.4 , and 52.6% of the patients were male (Table 1). The most common comorbidities were hypertension and diabetes

mellitus. There were no differences between the two groups in any comorbidities ($P > 0.05$). Similarly, there were no significant differences in vital signs and clinical scores of patients in the first two days of admission and in the percentage of pulmonary involvement ($P > 0.05$).

The overall mortality rate was 101 (74.8%). The 30-day mortality rate was significantly higher in intubated patients (90.6%) than in tracheostomy patients (55%) ($P < 0.001$). The survival analysis of patients in ICU showed that the overall survival was 29 days on average (median=18 days). In the group of intubated patients, the average survival was 15 days (median=12), while in the group of tracheostomized patients, the average survival was 44 days (median=34), indicating that tracheostomized patients had a significantly longer survival time (length of stay in ICU) than intubated patients ($P < 0.001$) (Figure 2).

Table 1. Comorbidity and mortality comparison between intubated and tracheostomized patients

	Intubated patients N=75	Tracheostomized patients N=60	P
Hypertension	35 (46.6%)	26 (43.3%)	0.48
Diabetes	39 (55.7%)	28 (46.6%)	0.33
Ischemic heart disease	8 (10.6%)	13 (21.6%)	0.08
Asthma, COPD	9 (12%)	3 (5%)	0.15
Chronic kidney disease	8 (10.6%)	2 (3.3%)	0.17
Hypothyroidism	0	1 (1.6%)	0.99
CVA	0	2 (3.2%)	0.97
Epilepsy	0	1 (1.6%)	0.99
Mortality	68 (90.6%)	33 (55%)	<0.001*

Abbreviations: COPD, chronic obstructive pulmonary disease; CVA, cerebrovascular accident

* Statistically significant

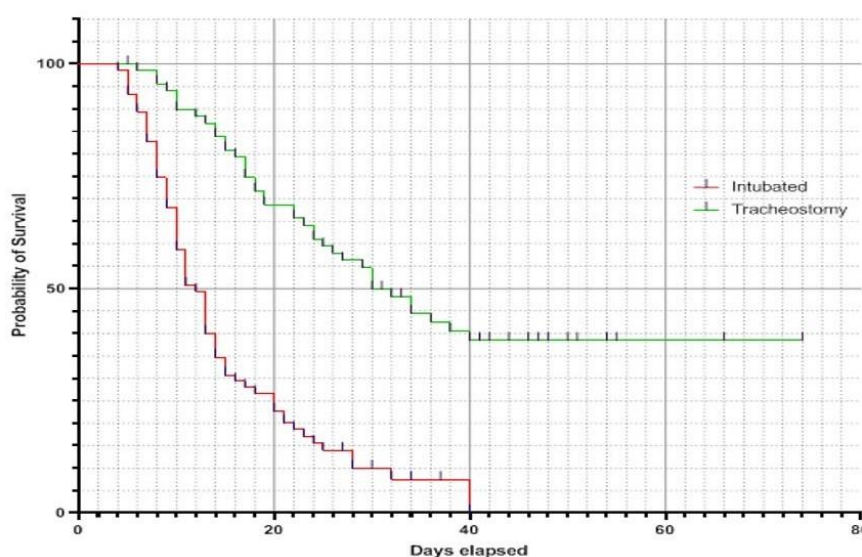


Figure 2. The 30-day survival analysis of intubated and tracheostomized patients, $P < 0.001$

Analysis of the survival in tracheostomy patients showed no significant difference ($P > 0.05$) in the mean survival between early tracheostomy patients (41 days) and late tracheostomy patients (44 days). The overall mortality rate in tracheostomy patients was reported to be 55%. No statistically significant ($P > 0.05$) difference was seen between the early tracheostomy group (18/30-60%) and the late tracheostomy group (15/30-50%).

Discussion

This study confirms the lifesaving value of the tracheostomy method in critical COVID-19 patients under mechanical ventilation. Being safe for both COVID-19 patients and healthcare workers (21), tracheostomy is one of the oldest respiratory tract surgical procedure (22). The PDT procedure over a guide wire was first described in 1985, and it is increasingly performed in intensive care units (23).

The need for tracheostomy and its timing is a controversial issue, particularly in COVID-19 patients. Our results showed that tracheostomized COVID-19 patients had a significantly longer survival time than intubated patients. In several studies, Intubated COVID-19 patients, showed poor prognosis, and some were extubated (14,24-26). On the other hand, Post-extubation complications such as laryngeal edema and stridor in these patients, lead to the need for re-intubation immediately (20,21). Critical COVID-19 patients who were under intubation for an average of five days, had a short survival time of five days or less (27,28). Tracheostomy can reduce the Post-extubation complications, facilitate weaning from mechanical ventilation, decrease the length of ICU stay, and increase the availability of ICU beds during the pandemic (17). However, a longer ICU stay in the tracheostomized patients was seen in our study as the result of longer survival time in these patients, and the death of COVID-19 patients was probably associated with less access to the ICU beds.

Emergency tracheostomy may be performed in airway or threatened obstruction, laryngeal edema, or failed extubation due to weakness, weak cough, and profuse secretions for non-COVID-19 and COVID-19 patients (17,20). Patients who underwent the emergency tracheostomy due to obstructive reasons were excluded from our study.

Time of tracheostomy in COVID-19 patients varies from 3 to 21 days in different studies, although most protocols have recommended 14 days from the time of

intubation to perform tracheostomy (29). In non-Covid-19 mechanically ventilated patients, early tracheostomy (usually within 7 days of intubation) is often recommended for its reducing effects on extubation complications, mechanical ventilation duration, the length of ICU stay, the chance of subglottic stenosis, and the mortality rate (30-34). In COVID-19 patients, early tracheostomy is less encouraged due to safety concerns for healthcare providers. Although strong scientific evidence does not seem to support this hypothesis (21,35,36), some protocols advocate delaying tracheostomy until the negative COVID-19 PCR test (29). However, the use of appropriate personal protective equipment (PPE) is critical to prevent the spread of viral aerosols (37,38). In our study, 30 people underwent early tracheostomy during the first week from intubation and in accordance with tracheostomy instructions before the COVID-19 pandemic. All healthcare providers were obliged to use PPE, including standard precautions, N95 mask, gowns, and face shield during the procedure. Due to these infection control concerns, most protocols recommend tracheostomy after the second week in COVID 19 patients despite the existence of abundant evidence in pre-COVID 19 area to support early tracheostomy within the first week of intubation (29,31,39,40).

Considering the variation in the definition of early tracheostomy, different studies have evaluated different timing of tracheostomy. In a multicenter retrospective study on COVID-19 patients undergoing elective tracheostomy in China, early tracheostomy (≤ 14 days) was associated with a higher mortality rate, despite improved clinical conditions of patients (SOFA and APACHE II scores) (41). In another prospective cohort study, early tracheostomy (≤ 10 days) was associated with a shorter duration of mechanical ventilation and decreased hospital stay but no significant difference in the mortality rate (42). Similarly, in our comparative study, early tracheostomy (≤ 7 days) was not significantly associated with longer 30-day survival and overall survival time in COVID-19 patients. Further prospective studies on more samples are required to increase the reliability of our results.

In conclusion, tracheostomy is a preferred method in airway management of severe COVID-19 patients under mechanical ventilation; however, tracheostomy within the first week of intubation may not be associated with an increased chance of survival.

Acknowledgments

The authors would like to thank Mrs. Fariba Zamani for language editing of this paper. They also thank all ICU staff at Imam Khomeini Hospital Complex for their efforts during the COVID-19 pandemic.

References

- Derraik JG, Anderson WA, Connelly EA, Anderson YC. Rapid review of SARS-CoV-1 and SARS-CoV-2 viability, susceptibility to treatment, and the disinfection and reuse of PPE, particularly filtering facepiece respirators. *Int J Environ Res Public Health* 2020;17:6117.
- Hasöksüz M, Kilic S, Saraç F. Coronaviruses and sars-cov-2. *Turk J Med Sci* 2020;50:549-56.
- Azhar EI, Hui DS, Memish ZA, Drosten C, Zumla A. The middle east respiratory syndrome (MERS). *Infect Dis Clin North Am* 2019;33:891-905.
- Baharoon S, Memish ZA. MERS-CoV as an emerging respiratory illness: a review of prevention methods. *Travel Med Infect Dis* 2019;32:101520.
- Huang C, Wang Y, Li X, Ren L, Zhao J, Hu Y, et al. Clinical features of patients infected with 2019 novel coronavirus in Wuhan, China. *Lancet* 2020;395:497-506.
- Lu R, Zhao X, Li J, Niu P, Yang B, Wu H, et al. Genomic characterisation and epidemiology of 2019 novel coronavirus: implications for virus origins and receptor binding. *Lancet* 2020;395:565-74.
- Zhu N, Zhang D, Wang W, Li X, Yang B, Song J, et al. A Novel Coronavirus from Patients with Pneumonia in China, 2019. *N Engl J Med* 2020;382:727-33.
- WHO COJRTCSoc-RWC-CT. World health organization, 2020. (Accessed at [https://www.who.int/emergencies/diseases/novel-coronavirus-2019/technical-guidance/naming-the-coronavirus-disease-\(covid-2019\)](https://www.who.int/emergencies/diseases/novel-coronavirus-2019/technical-guidance/naming-the-coronavirus-disease-(covid-2019)).)
- Mohapatra RK, Pintilie L, Kandi V, Sarangi AK, Das D, Sahu R, et al. The recent challenges of highly contagious COVID- 19, causing respiratory infections: Symptoms, diagnosis, transmission, possible vaccines, animal models, and immunotherapy. *Chem Biol Drug Des* 2020;96:1187-208.
- Yuki K, Fujiogi M, Koutsogiannaki S. COVID-19 pathophysiology: A review. *Clin Immunol* 2020;215:108427.
- Bhatraju PK, Ghassemieh BJ, Nichols M, Kim R, Jerome KR, Nalla AK, et al. Covid-19 in critically ill patients in the Seattle region—case series. *N Engl J Med* 2020;382:2012-22.
- Arentz M, Yim E, Klaff L, Lokhandwala S, Riedo FX, Chong M, et al. Characteristics and outcomes of 21 critically ill patients with COVID-19 in Washington State. *JAMA* 2020;323:1612-4.
- Guan WJ, Ni ZY, Hu Y, Liang WH, Ou CQ, He JX, et al. Clinical characteristics of coronavirus disease 2019 in China. *N Engl J Med* 2020;382:1708-20.
- Allameh SF, Nemati S, Ghalehtaki R, Mohammadnejad E, Aghili SM, Khajavirad N, et al. Clinical characteristics and outcomes of 905 COVID-19 patients admitted to Imam Khomeini hospital complex in the capital city of Tehran, Iran. *Arch Iran Med* 2020;23:766-75.
- Goyal P, Choi JJ, Pinheiro LC, Schenck EJ, Chen R, Jabri A, et al. Clinical characteristics of Covid-19 in New York city. *N Engl J Med* 2020;382:2372-4.
- Wunsch H. Mechanical ventilation in COVID-19: interpreting the current epidemiology. *Am J Respir Crit Care Med* 2020;202:1-4.
- McGrath BA, Brenner MJ, Warrillow SJ, Pandian V, Arora A, Cameron TS, et al. Tracheostomy in the COVID-19 era: global and multidisciplinary guidance. *Lancet Respir Med* 2020;8:717-25.
- Pandian V, Morris LL, Brodsky MB, Lynch J, Walsh B, Rushton C, et al. Critical care guidance for tracheostomy care during the COVID-19 pandemic: a global, multidisciplinary approach. *Am J Crit Care* 2020;29:e116-e27.
- Vargas M, Sutherasan Y, Brunetti I, Micalizzi C, Insorsi A, Ball L, et al. Mortality and long-term quality of life after percutaneous tracheotomy in Intensive Care Unit: a prospective observational study. *Minerva Anestesiol* 2018;84:1024-31.
- McGrath BA, Wallace S, Goswamy J. Laryngeal oedema associated with COVID-19 complicating airway management. *Anaesthesia* 2020;75:972.
- Chao TN, Harbison SP, Braslow BM, Hutchinson CT, Rajasekaran K, Go BC, et al. Outcomes after tracheostomy in COVID-19 patients. *Ann Surg* 2020;272:e181-6.
- Frost EA. Rhinology, Laryngology. Tracing the tracheostomy. *Ann Otol Rhinol Laryngol* 1976;85:618-24.
- Al-Ansari MA, Hijazi MH. Clinical review: percutaneous dilatational tracheostomy. *Crit Care* 2006;10:202.
- Yang X, Yu Y, Xu J, Shu H, Liu H, Wu Y, et al. Clinical course and outcomes of critically ill patients with SARS-CoV-2 pneumonia in Wuhan, China: a single-centered, retrospective, observational study. *Lancet Respir Med* 2020;8:475-81.
- Zhou F, Yu T, Du R, Fan G, Liu Y, Liu Z, et al. Clinical course and risk factors for mortality of adult inpatients with COVID-19 in Wuhan, China: a retrospective cohort study. *Lancet* 2020;395:1054-62.
- Richardson S, Hirsch JS, Narasimhan M, Crawford JM,

Early or late tracheostomy in COVID-19

- McGinn T, Davidson KW, et al. Presenting characteristics, comorbidities, and outcomes among 5700 patients hospitalized with COVID-19 in the New York City area. *JAMA* 2020;323:2052-9.
27. Fan H, Zhang L, Huang B, Zhu M, Zhou Y, Zhang H, et al. Retrospective analysis of clinical features in 101 death cases with COVID-19. *MedRxiv* 2020.
28. Zhang L, Huang B, Xia H, Fan H, Zhu M, Zhu L, et al. Retrospective analysis of clinical features in 134 coronavirus disease 2019 cases. *Epidemiol Infect* 2020;148:e199.
29. Bier-Laning C, Cramer JD, Roy S, Palmieri PA, Amin A, Añon JM, et al. Tracheostomy During the COVID-19 Pandemic: Comparison of International Perioperative Care Protocols and Practices in 26 Countries. *Otolaryngol Head Neck Surg* 2021;164:1136-47.
30. Liu CC, Livingstone D, Dixon E, Dort JCJOH. Early versus late tracheostomy: a systematic review and meta-analysis. *Otolaryngol Head Neck Surg* 2015;152:219-27.
31. Griffiths J, Barber VS, Morgan L, Young JD. Systematic review and meta-analysis of studies of the timing of tracheostomy in adult patients undergoing artificial ventilation. *BMJ* 2005;330:1243.
32. Hosokawa K, Nishimura M, Egi M, Vincent JL. Timing of tracheotomy in ICU patients: a systematic review of randomized controlled trials. *Crit Care* 2015;19:424.
33. Koshkareva Y, Gaughan JP, Soliman AM. Rhinology, Laryngology. Risk factors for adult laryngotracheal stenosis: a review of 74 cases. *Ann Otol Rhinol Laryngol* 2007;116:206-10.
34. Chao TN, Braslow BM, Martin ND, Chalian AA, Atkins J, Haas AR, et al. Tracheotomy in ventilated patients with COVID-19. *Ann Surg* 2020;272:e30-2.
35. Wang J, Zhou M, Liu F. Reasons for healthcare workers becoming infected with novel coronavirus disease 2019 (COVID-19) in China. *J Hosp Infect* 2020;105:100-1.
36. Chu J, Yang N, Wei Y, Yue H, Zhang F, Zhao J, et al. Clinical characteristics of 54 medical staff with COVID-19: a retrospective study in a single center in Wuhan, China. *J Med Virol* 2020;92:807-13.
37. Jacob T, Walker A, Mantelakis A, Gibbins N, Keane O. A framework for open tracheostomy in COVID-19 patients. *Clin Otolaryngol* 2020;45:649-51.
38. Pichi B, Mazzola F, Bonsembiante A, Petruzzi G, Zocchi J, Moretto S, et al. CORONA-steps for tracheotomy in COVID-19 patients: a staff-safe method for airway management. *Oral Oncol* 2020;105:104682.
39. Adly A, Youssef TA, El-Begermy MM, Younis HM. Timing of tracheostomy in patients with prolonged endotracheal intubation: a systematic review. *Eur Arch Otorhinolaryngol* 2018;275:679-90.
40. Andriolo BN, Andriolo RB, Saconato H, Atallah ÁN, Valente O. Early versus late tracheostomy for critically ill patients. *Cochrane Database Syst Rev* 2015;1:CD007271.
41. Tang Y, Wu Y, Zhu F, Yang X, Huang C, Hou G, et al. Tracheostomy in 80 COVID-19 Patients: A Multicenter, Retrospective, Observational Study. *Front Med (Lausanne)* 2020;7:615845.
42. Avilés-Jurado FX, Prieto-Alhambra D, González-Sánchez N, de Ossó J, Arancibia C, Rojas-Lechuga MJ, et al. Timing, Complications, and Safety of Tracheotomy in Critically Ill Patients With COVID-19. *JAMA Otolaryngol Head Neck Surg* 2020;147:1-8.